

GFP

Determination of GFP by Capillary Electrophoresis and Laser Induced Fluorescence Detection

Instruments:

Capillary Electrophoresis: Phoresis 100
Detector: Picometrics ZETALIF 2000 detector
Laser: Argon Ion laser 488 nm, 15 mW

Sample:

GFP standard in water, ref. Clontech (Cat#8360-2)

Reagents:

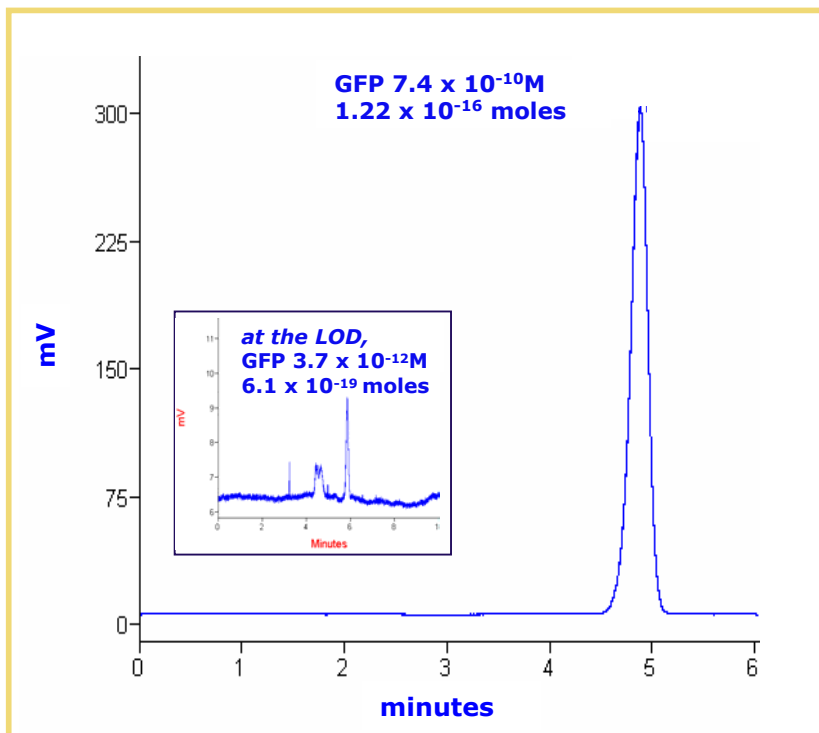
None (Naturally fluorescent compound)

Methods:

Capillary: 75 μ m ID, 88 cm length (38 cm effective length)
Buffer: 10 mM Sodium phosphate tribasic
Voltage: 15 kV, 31 μ A
Injection: 30 seconds at 50 mBar.
Estimated injected volume 165 nL (3.2 pg of GFP)

Limit of Detection*:
 10^{-12} M (6.1×10^{-19} moles or
16.5 femtograms)

* Estimated for a S/N of 3



Source: Picometrics application lab. 08/03.

All specifications are subject to change as a part of our continual efforts for product improvement. Picometrics and ZETALIF are trademarks of Picometrics S.A., France;

© Picometrics 2006.