

Interferon Beta

Detection of Interferon Beta by Capillary Electrophoresis and Native Laser Induced Fluorescence.

Instruments:

Capillary Electrophoresis: Agilent CE
Detector: Picometrics ZETALIF detector
Laser: DPSS Laser 266 nm, 2 mW

Sample:

Interferon Beta SIGMA, ref. I-4151; 12.15 µg/mL or 0,607 µM, (10⁶ I.U./mL), diluted in water.

Reagents:

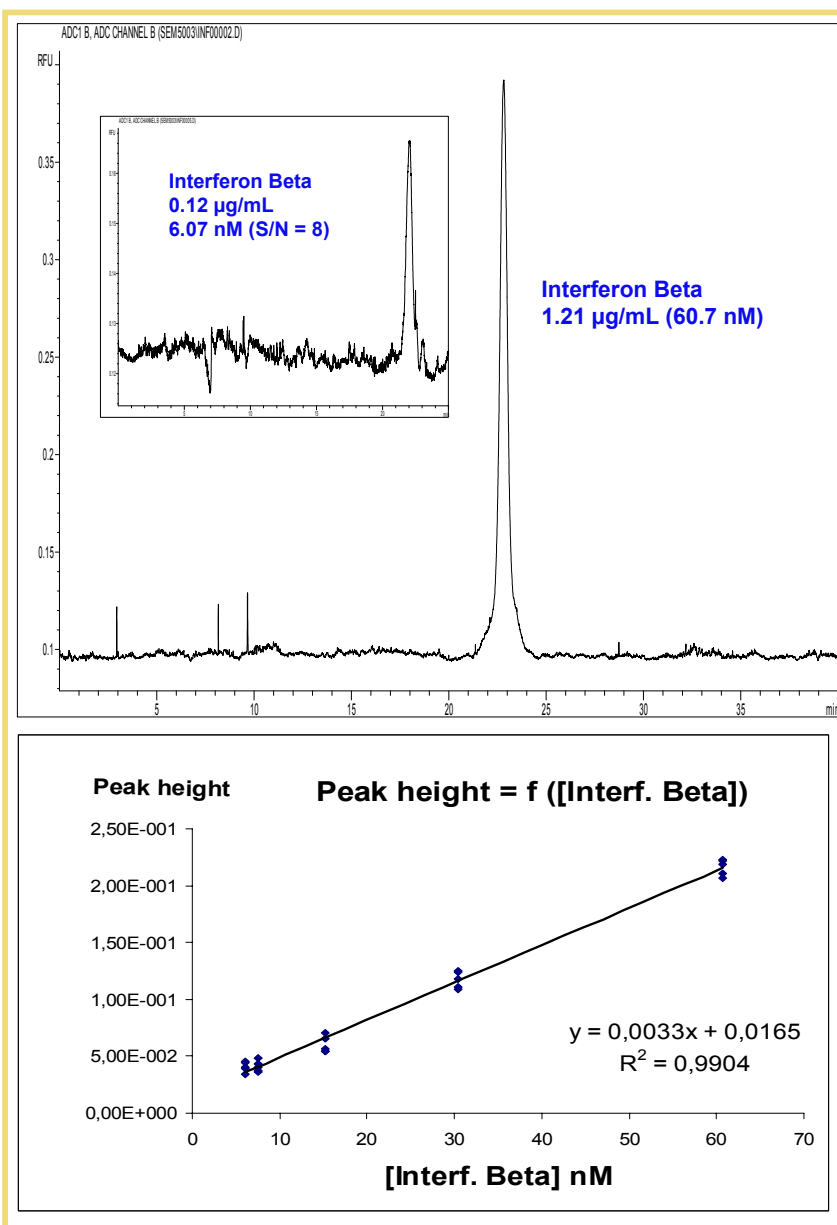
None (Naturally fluorescent compound)

Methods:

Capillary: 50 µm ID, 56 cm effective length
Buffer: Borate 50 mM + 20 mM SDS
Voltage: 20 kV (50 µA)
Injection: 50 mbar, 30 sec. (estimated injected volume= 41 nL)
Rise Time: 0.5 sec.

Limit of Detection*:
46 ng/mL i.e. 2.3 nM

* Estimated for a S/N of 3



All specifications are subject to change as a part of our continual efforts for product improvement. Picometrics and ZETALIF 2000 are trademarks of Picometrics S.A., France.

Source: Picometrics application lab. 01/2004



more on www.picometrics.com