

# Serotonin

Determination of Serotonin using Capillary Electrophoresis and Laser Induced Fluorescence Detection

## Instruments:

Capillary Electrophoresis: TSP Spectra PHORESIS 100  
Detector: Picometrics ZETALIF 2000 detector  
Laser: DPSS 266 nm, 2 mW

## Sample:

Standard Solution in water

## Reagents:

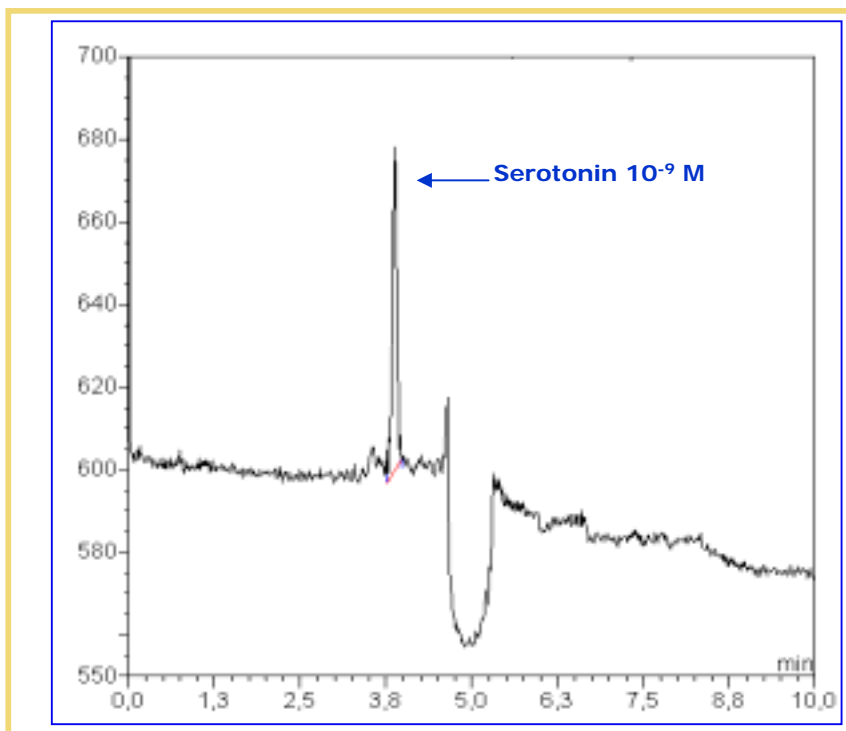
None (Naturally fluorescent compounds)

## Methods:

Capillary: 50  $\mu\text{m}$  ID, 47 cm effective length  
Buffer: 80 mM Tetra Borate (pH = 9.2)  
Voltage: 19 kV  
Injection: electrokinetic, 30 sec.

Limit of Detection\*:  
 $2 \times 10^{-10} \text{ M}$

\* Estimated for a S/N of 3



Source: Picometrics application lab.