

# Glycoprotein

Determination of a glycoprotein (vaccine) using Capillary Electrophoresis and Laser Induced Fluorescence detection

## Instruments:

Capillary Electrophoresis: TSP Spectra PHORESIS 100  
Detector: Picometrics ZETALIF 2000 detector  
Laser: DPSS 266 nm, 3 mW

## Sample:

Solution of purified glycoprotein (PM>350kD)  
Concentration range 0.25 to 250 µg/ml

## Reagents:

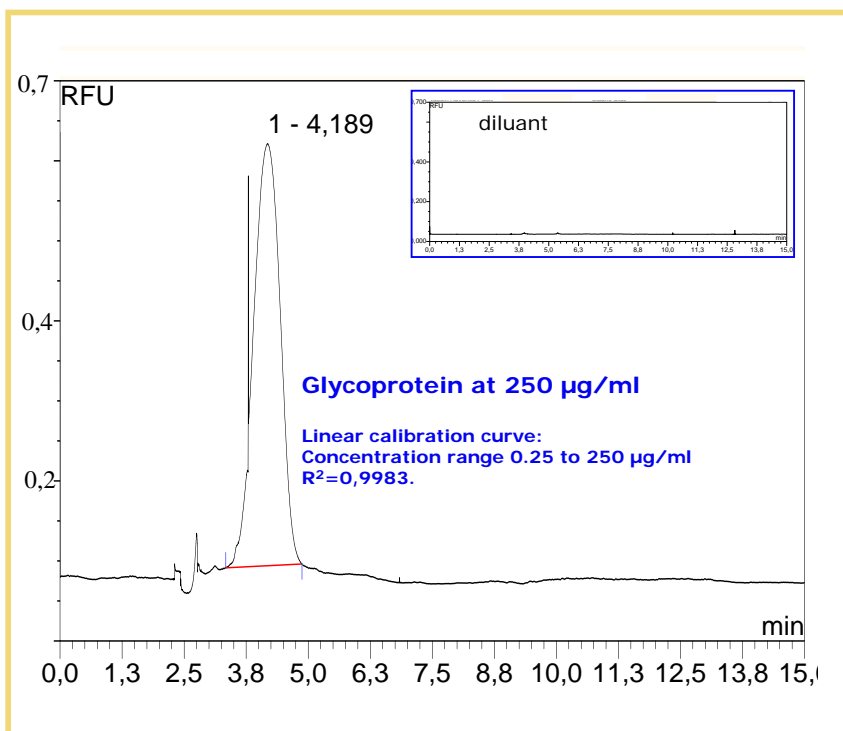
None (Naturally fluorescent compound)

## Methods:

Capillary: 75 µm ID, 40 cm effective length  
Buffer: 5 mM tribasic Phosphate buffer (pH = 12)  
Voltage: 25 kV  
Injection: 4 sec., 700 mBar

**Limit of detection\*:**  
0,25 µg/ml

\* Estimated for a S/N of 3



Source: Picometrics application lab.