

# Peptides

Determination of Rhodamine Green Labeled Peptides by  $\mu$ HPLC and Laser Induced Fluorescence Detection

## Instruments:

HPLC pump: Agilent 1100 series + LC Packings  
Acurate™ Flow Splitter  
Injector: Valco injector, internal loop 0.5  $\mu$ L  
Detector: Picometrics ZETALIF 2000 detector  
Laser: Argon Ion laser 488 nm, 25 mW

## Sample:

Tryptic peptides from complex proteome sample

## Reagents:

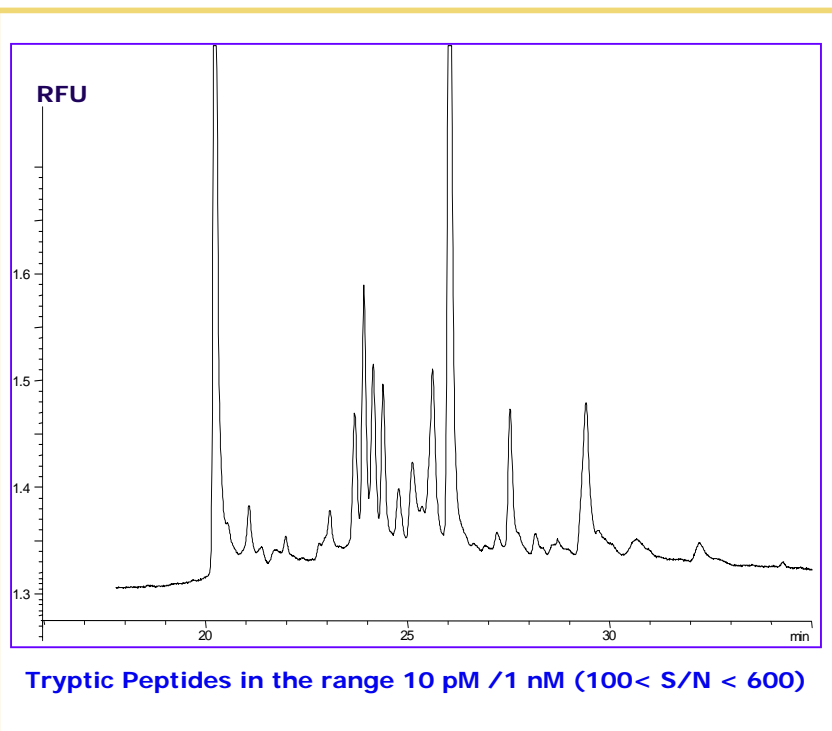
Derivatization agent: Rhodamine Green

## Methods:

Mobile Phase: Gradient of acetonitrile (with 0.08% formic acid) and water (with 0.1% formic acid); from 1.5% to 60% acetonitrile in 30 minutes  
Flow rate: 4  $\mu$ L/min  
Injection volume: 0.5  $\mu$ L  
Column: Zorbax, SBC 185  $\mu$ m, 0.5 x 150 mm  
Detector Capillary: 75  $\mu$ m ID

**Limit of Detection\*:**  
Subnanomolar range

\* Estimated for a S/N of 3



Source: Picometrics application lab.