

Neuropeptide FF

Determination of Neuropeptide FF using Capillary Electrophoresis and Laser Induced Fluorescence Detection

Instruments:

Capillary Electrophoresis: TSP Phoresis 100 CE
Detector: Picometrics ZETALIF 2000 detector
Laser: Argon Ion laser 488 nm, 10 mW

Sample:

Rat brain microdialysates

Reagents:

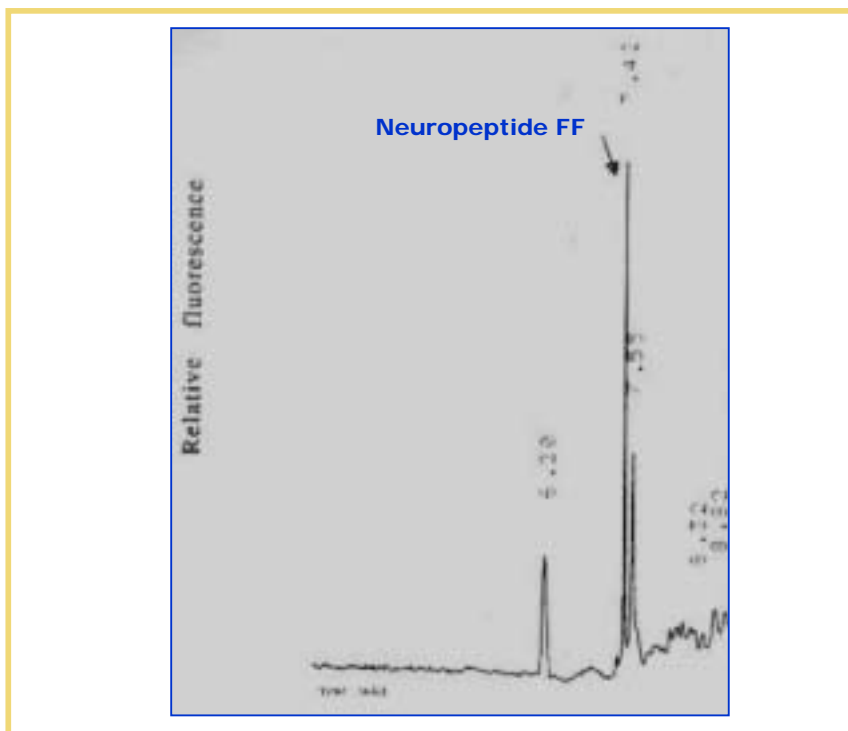
Derivatization agent: precolumn derivatization with Fluorescein Isothiocyanate (FITC)

Methods:

Capillary: Fused silica capillary, 85 cm length (70 cm effective length) 50 µm ID
Buffer: 100 mM borate, pH 9
Voltage: positive, 20 kV
Injection: negative pressure, 20 seconds

Limit of Detection*:
10 NanoMolar level

* Estimated for a S/N of 3



Source: Picometrics application lab.