

# Amino acids

Determination of OPA labeled Amino Acids using  $\mu$ HPLC and Laser Induced Fluorescence Detection

## Instruments:

HPLC pump: Agilent 1100 series + LC Packings  
Acurate™ Flow Splitter  
Injector: LC packings Famos Automated Injector  
Detector: Picometrics ZETALIF 2000 detector  
Laser: He-Cd Laser, 325 nm, 15 mW

## Sample:

Mixture of two amino acids, Aspartic and Glutamic acids, standard solution in HCl

## Reagents:

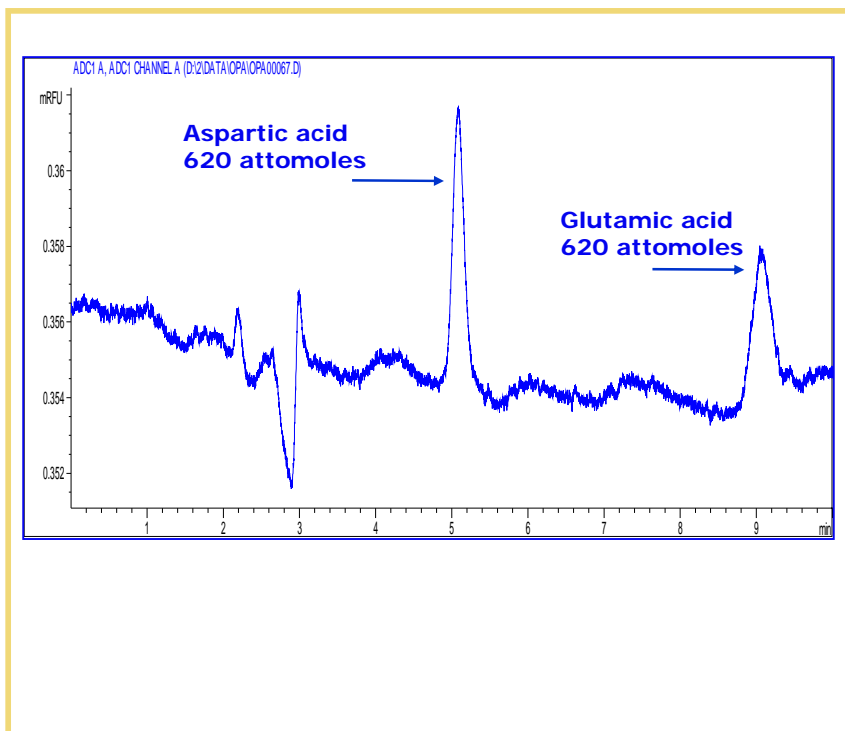
Derivatization agent: OPA

## Methods:

Mobile Phase: 40% sodium acetate 50 mM, pH=7, 60% methanol  
Flow rate: 4  $\mu$ L/min  
Injection volume: 120  $\mu$ L  
Column: micro column LC Packings PepMap™, C18, 3  $\mu$ m, 300  $\mu$ m ID  
Detector Capillary: 50 $\mu$ m ID

Limit of Detection\*:  
 $10^{-12}$  M

\* Estimated for a S/N of 3



Source: Picometrics application lab.