

Aflatoxin M1

Determination of aflatoxins M1 using HPLC and Laser Induced Fluorescence Detection

Instruments:

HPLC pump: Agilent 1100 series
Injector: LC packings Famos Automated Injector
Detector: Picometrics ZETALIF 2000 detector
Laser: He-Cd Laser, 325 nm, 15 mW

Sample:

5 µg diluted in 500 µL of Acetonitrile (10µg/mL),
sample diluted in water

Reagents:

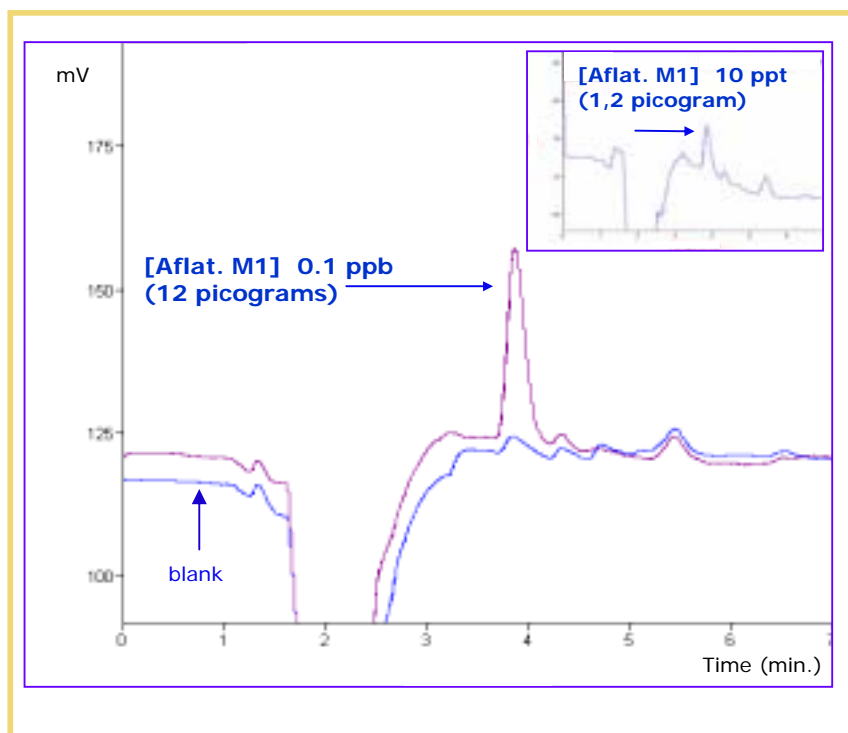
None (Naturally fluorescent compounds)
No derivatization, no precolumn cleaning

Methods:

Mobile Phase: Water/Methanol (40/60 V/V)
Flow rate: 0.4 mL/min
Injection volume: 120 µL
Column: YMC Europe GmbH, length 150 mm x 3
mm ID. Packing YMC Pro C18, 120 Å, S-5 µm
Detector Capillary: 320 µm ID

Limit of Detection*:
1 ppt

* Estimated for a S/N of 3



Source: Picometrics application lab.