

# Aflatoxins B & G

Determination of Beta and Gamma aflatoxins using HPLC and Laser Induced Fluorescence Detection

## Instruments:

HPLC pump: Agilent 1100 series  
Injector: LC packings Famos Automated Injector  
Detector: Picometrics ZETALIF 2000 detector  
Laser: He-Cd Laser, 325 nm, 15 mW

## Sample:

Diluted in water from a sample at 3 ppb (G2/B2 types) and 10 ppb (G1/B1 types)

## Reagents:

None (Naturally fluorescent compounds)  
No derivatization, no precolumn cleaning

## Methods:

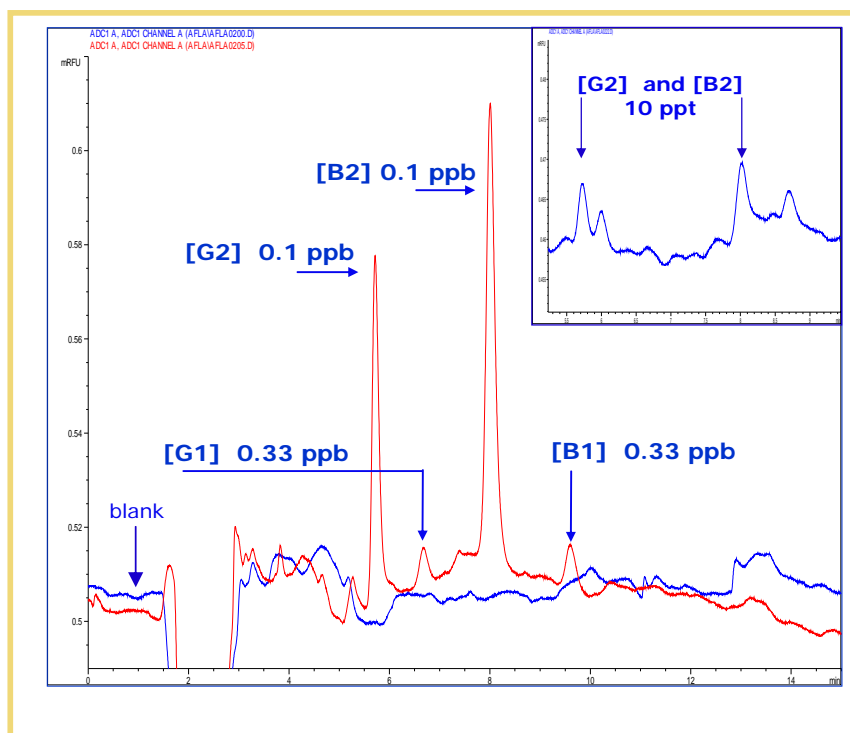
Mobile Phase: Water/Methanol (54 / 46 V/V)  
Flow rate: 0.4 mL/min  
Injection volume: 120 µL  
Column: YMC Europe GmbH, length 150 mm x 3 mm ID. Packing YMC Pro C18, 120 Å, 5 µm  
Detector Capillary: 320 µm ID

## Limit of Detection\*:

50 ppt for B1/G1 types

1.5 ppt for B2/G2 types

\* Estimated for a S/N of 3



Source: Picometrics application lab.